



TECNOGLASS *Low-E Series*

Solar Control Low-E Glass
Energy Efficiency



High Performance Low-E Glass

Our Low-E coatings offer efficient energy saving benefits to any architectural project, minimizing the amount of ultraviolet and infrared light that passes through the glass without compromising the amount of visible light transmittance. At TecnoGlass we offer a wide variety of coatings, both passive and solar control, which can be applied to clear or tinted glass.

TecnoGlass' coatings and configurations feature an extensive range of sizes, colors, patterns, printing and edgework solutions that allow architects to explore and take advantage of more variables in the project's design. Maximizing benefits like low solar heat gain coefficient and UV transmittance without compromising its aesthetics. All of our Low-E coatings meet the requirements of the HVAC systems, saving energy costs and reducing carbon emissions.



The R-Series is a full range of high-performance "cool crisp" aesthetic insulating Low-E glass that offers low to high reflectivity and visibility and a low solar heat gain coefficient. These coatings have a neutral brightness that enhances the appearance of low-iron glass as well as various tinted glass.



The N-Series is a full range of high performance neutral to silver blue aesthetic insulating Low-E glass developed to enhance solar control and energy efficiency while offering neutral aesthetics. These coatings offer high levels of transparency which allows the natural daylight pass through even as it reduces glare and UV transmittance.

500 Waverly
New York City, NY
TG N70/38 on clear



14 LeCount Place
New Rochelle, NY
TG R53/33 on clear



545 Wyn
Miami, FL
TG R44/21 on optiwhite



AC Hotel DC
Washington DC
TG R53/33 on clear



Solar Control with the Latest Low-E Technology

Features

- Low U-Values
- Superior aesthetic
- Diverse ranges of reflexivity
- Insulating laminated, heat strengthened and bent glass available
- Extensive range of colors, patterns and designs for different projects
- License to process Solarban 60, Solarban 70 and Sungate 400

Advantages

- Heat control and energy efficiency
- Protection against UV radiation
- Optimum light transmission
- Provides maximum daylight, transparency and improves visibility

1" IGU INSULATING GLASS DATA - DOUBLE GLAZED

1/4" (6mm)/ 1/2" (12,7 mm) a.s./ 1/4" (6mm)

Product	Outboard - Inboard Substrate	Visible			Solar		U-Val
		Trans.	Refl. Ext	Refl. Int	Trans.	Refl. Ext	Winter
R33/22	Clear + Clear	32.6%	42.4%	12.8%	17.6%	46.0%	0.29
	Low Iron + Low Iron	34.0%	43.0%	13.0%	21.0%	55.0%	0.29
R36/23	Clear + Clear	36.4%	45.8%	21.3%	19.3%	48.6%	0.29
	Low Iron + Low Iron	38.0%	47.0%	22.0%	23.0%	58.0%	0.29
R43/28	Clear + Clear	41.3%	35.6%	14.5%	22.7%	41.1%	0.29
	Low Iron + Low Iron	45.0%	35.0%	14.0%	28.0%	49.0%	0.29
R47/31	Clear + Clear	46.9%	32.4%	15.6%	25.5%	39.8%	0.29
	Low Iron + Low Iron	49.0%	33.0%	16.0%	30.0%	48.0%	0.29
R53/33	Clear + Clear	52.4%	33.2%	22.4%	27.4%	42.0%	0.29
	Low Iron + Low Iron	55.0%	34.0%	23.0%	32.0%	51.0%	0.29
R59/37	Clear + Clear	57.4%	29.5%	21.7%	30.5%	39.9%	0.29
	Low Iron + Low Iron	60.0%	30.0%	23.0%	36.0%	48.0%	0.29
R44/21	Clear + Clear	43.8%	26.3%	22.6%	17.0%	44.8%	0.29
	Low Iron + Low Iron	46.0%	27.0%	24.0%	18.0%	55.0%	0.29
N31/18	Clear + Clear	31.0%	21.0%	20.0%	13.0%	33.0%	0.29
	Low Iron + Low Iron	32.0%	21.0%	21.0%	14.0%	39.0%	0.29
N40/22	Clear + Clear	39.2%	14.2%	12.1%	18.1%	22.0%	0.29
	Low Iron + Low Iron	41.0%	14.0%	12.0%	20.0%	26.0%	0.29
N48/25	Clear + Clear	48.0%	13.0%	11.0%	21.0%	27.0%	0.29
	Low Iron + Low Iron	50.0%	12.0%	11.0%	23.0%	32.0%	0.29
N70/38	Clear + Clear	70.0%	11.7%	12.0%	34.0%	28.0%	0.29
	Low Iron + Low Iron	74.0%	11.0%	12.0%	39.0%	41.0%	0.29
N76/60	Clear + Clear	76.1%	13.3%	13.2%	50.8%	15.8%	0.32
	Low Iron + Low Iron	80.0%	14.0%	14.0%	65.0%	20.0%	0.32
NT52/22	Clear + Clear	51.5%	12.8%	13.4%	18.7%	38.8%	0.29
	Low Iron + Low Iron	52.0%	13.0%	13.0%	19.0%	49.0%	0.29
SB70	Clear + Clear	64.0%	13.0%	14.0%	24.0%	40.0%	0.28
	Low Iron + Low Iron	68.0%	13.0%	14.0%	26.0%	54.0%	0.28

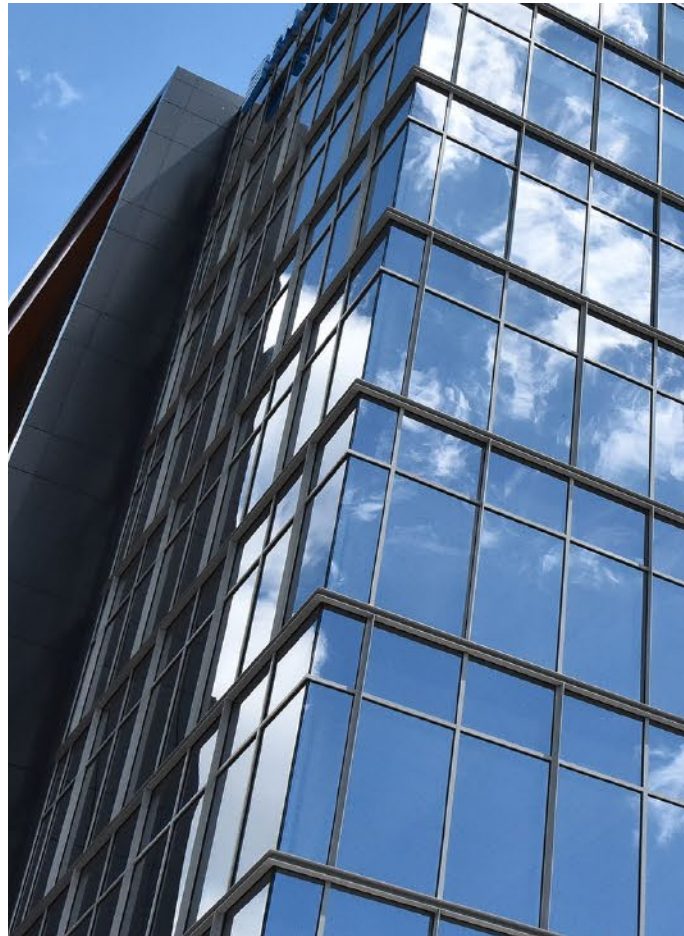
The results represent Center-of-Glass performance data based on NFRC 100 Environmental Design Conditions utilizing the LBNL Window 7.3 software of factory production. Actual values may vary slightly due to variations in the production process. This data is to be used for comparison purposes only. It is the responsibility to ensure the manufacturability of the above glazing configurations as well as evaluating appropriate design considerations such as window code compliance. Tecnoglass recommends that a full size mock-up be reviewed under the specific job-site conditions and retain the mock-up as a record. Some constructions may have increased optical distortion and/or strain iridescence from stacked multiple individual layers especially when the glass is curved. Differences can occur when a Low-E or reflective coating is located adjacent to the interlayer material. A coating facing an airspace in an IG unit may cause an inboard tint when used with clear Low-E outboard can increase regular color shift effect.

9/16" LAMINATED GLAZING

1/4" (6mm) + 0,060 PVB + 1/4"

Use	Shading Coefficient (SC)	Solar Heat Gain Coefficient (SHGC)	Light to Solar Gain (LSG)
Summer			
0.27	0.26	0.22	1.46
0.27	0.27	0.23	1.48
0.27	0.27	0.24	1.5
0.27	0.28	0.25	1.25
0.27	0.32	0.28	1.46
0.27	0.35	0.31	1.45
0.27	0.35	0.31	1.52
0.28	0.37	0.32	1.53
0.27	0.37	0.32	1.62
0.27	0.39	0.34	1.26
0.27	0.41	0.36	1.37
0.28	0.44	0.38	1.58
0.27	0.24	0.21	2.09
0.27	0.24	0.21	2.19
0.27	0.2	0.17	1.67
0.28	0.21	0.18	1.78
0.27	0.28	0.24	1.56
0.27	0.29	0.25	1.64
0.27	0.3	0.26	1.78
0.27	0.31	0.27	1.85
0.27	0.45	0.39	1.79
0.27	0.48	0.41	1.80
0.30	0.68	0.59	1.28
0.31	0.78	0.68	1.18
0.27	0.26	0.22	2.21
0.27	0.26	0.22	2.36
0.26	0.32	0.27	2.37
0.26	0.32	0.28	2.43

Product	Outboard - Inboard Substrate	Visible	
		Trans.	Refl. Ext
R36/23	Clear + Clear	34%	48%
R43/28	Clear + Clear	40%	36%
R47/31	Clear + Clear	47%	33%
R53/33	Clear + Clear	54%	32%
N70/38	Clear + Clear	72%	9%
	Low Iron + Low Iron	76%	9%
SB70	Clear + Clear	64%	16%
	Low Iron + Low Iron	67%	17%



ware program. Performance data is based on representative samples poses and should not be considered a contract. It is the recipient's and snow load analysis, thermal stress analysis, and local building a basis of acceptable product. Note: Be aware that laminated glazing s lites are heat treated. In addition transmitted and reflective color ay appear a different color than the same coating in a laminate. Dark

Low-E Series



TECNOGLASS



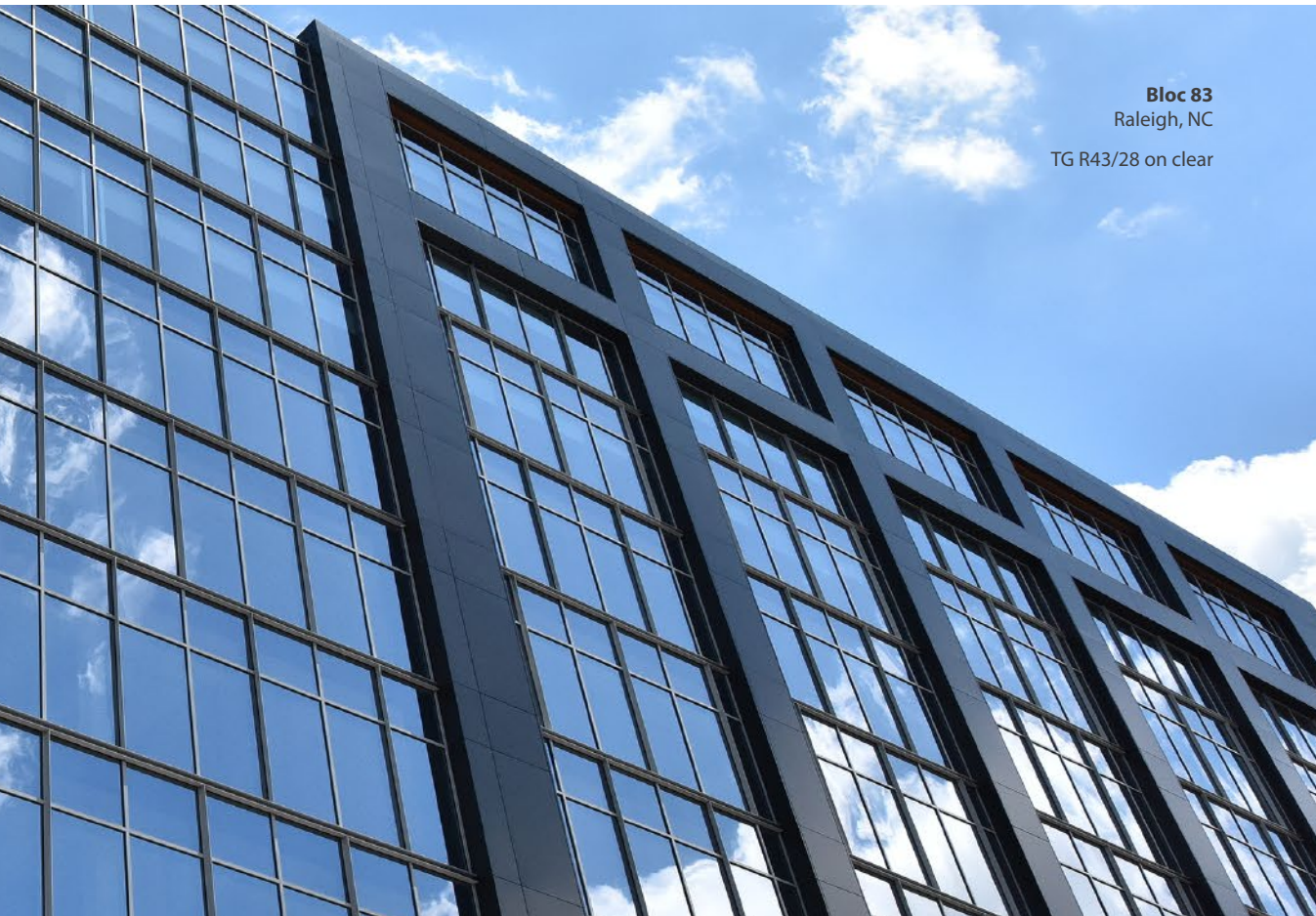
The Power of Quality

GLASS DATA

(6mm)

See more options and try
our glass performance calculator
at www.tecnoglass.com

Refl. Int	Solar		U-Value		Shading Coefficient (SC)	Solar Heat Gain Coefficient (SHGC)	Light to Solar Gain (LSG)
	Trans.	Refl. Ext	Winter	Summer			
26%	19%	50%	0.95	0.86	0.33	0.29	1.21
17%	23%	42%	0.95	0.86	0.39	0.34	1.18
19%	26%	40%	0.95	0.86	0.43	0.37	1.27
24%	29%	41%	0.95	0.86	0.44	0.38	1.42
10%	33%	28%	0.95	0.86	0.52	0.45	1.60
10%	38%	40%	0.95	0.86	0.51	0.45	1.69
17%	23%	40%	0.95	0.86	0.40	0.35	1.83
18%	25%	56%	0.95	0.86	0.36	0.31	2.16



Bloc 83
Raleigh, NC

TG R43/28 on clear



ARCHITECTURAL GLASS

www.tecnoglass.com

The information contained herein is exclusive property of Tecnoglass, who reserves the right to modify it, including but not limited to the designs and its specifications, without notice.

V4 - Feb 2024

TECNOGLASS



The Power of **Quality**



IGCC
INSULATING GLASS CERTIFICATION COUNCIL

SGC
Safety Glazing Certification Council

 **VitroCertified™**
INTERNATIONAL FABRICATOR